

Nikon D100

Digital Camera

Quick Start Guide



This guide gets you up and running with your Nikon digital camera at the most basic "point-and-shoot" settings. Once you have taken a few shots, read the reverse side of this sheet for information on copying pictures to your computer using Nikon View.

For complete information on using the D100, refer to the *Nikon Guide to Digital Photography* provided with your camera.

Unpack the camera

Be sure all items listed here were included with your camera.

NOTE: Memory cards are sold separately.

- 1 D100 camera
- 2 BF-1A body cap (attached to camera)
- 3 DK-10 Viewfinder eyepiece cup (attached to camera)
- 4 BM-2 LCD monitor cover (attached to camera)
- 5 Quick Start Guide (this guide)
- 6 Nikon Guide to Digital Photography
- 7 Warranty
- 8 Important Information
- 9 DK-5 eyepiece cap
- 10 AN-D100 strap
- 11 EN-EL3 rechargeable li-ion battery with terminal cover (instruction manual included)
- 12 MH-18 quick charger with power cable (instruction manual included)
- 13 EG-D100 video cable
- 14 UC-E4 USB cable
- 15 Nikon View CD-ROM
- 16 Nikon View Reference Manual CD-ROM



Use Only Nikon Brand Electronic Accessories

Your Nikon D100 digital camera is designed to the highest standards and includes complex electronic circuitry. Only Nikon brand electronic accessories (including battery chargers, batteries, and AC adapters) certified by Nikon specifically for use with your Nikon digital camera are engineered and proven to operate within the operational and safety requirements of this electronic circuitry.

THE USE OF NON-NIKON ELECTRONIC ACCESSORIES COULD DAMAGE YOUR CAMERA AND MAY VOID YOUR NIKON WARRANTY.
For more information about Nikon brand accessories, contact your local authorized Nikon dealer.

To Users of Digital Cameras with Interchangeable Lenses: Foreign Matter on the CCD

Nikon takes every possible precaution to prevent foreign matter from coming into contact with the CCD during production and shipping. The D100, however, is designed to be used with interchangeable lenses, and foreign matter may enter the camera when lenses are removed or exchanged. Once inside the camera, this foreign matter may adhere to the CCD, where it may appear in photographs taken under certain conditions. To prevent foreign matter from entering the camera, do not exchange lenses in dusty environments. To protect the camera when no lens is in place, be sure to replace the body cap provided with the camera, being careful to first remove all dust and other foreign matter that may be adhering to the body cap.

Should foreign matter find its way onto the CCD, clean the CCD as instructed in the camera manual or have the CCD cleaned by authorized Nikon service personnel. Photographs affected by the presence of foreign matter on the CCD can be retouched using the clean image options available in some third-party imaging software.

1 Charge the battery

Charge the EN-EL3 battery using the MH-18 quick charger provided with your camera.

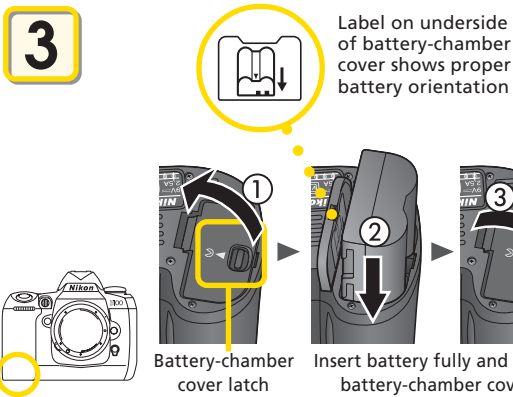
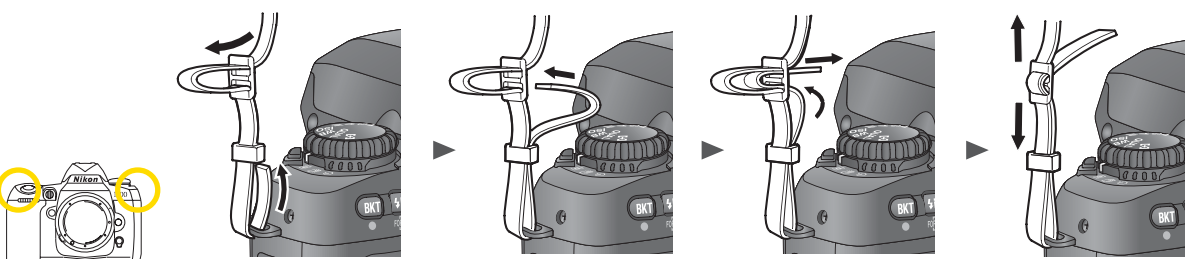
The CHARGE lamp will blink orange while charging. The CHARGE lamp will remain lit and glow orange when charging is complete.

An exhausted battery will take approximately two hours to recharge.

For details, see the documentation provided with your battery and charger.

2 Attach the strap

Attach the camera strap to the inlets on both sides of the camera body as shown.



3 Label on underside of battery-chamber cover shows proper battery orientation

1 Turn the camera off.

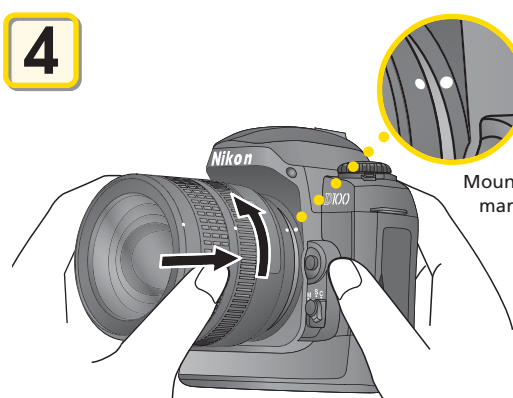
2 Slide the battery-chamber cover latch toward the **S** mark and open the battery-chamber cover (1). Slide the battery into the battery chamber as shown (2). Close the battery-chamber cover (3).

3 Turn the camera on and check the battery level in the control panel.

Insert the battery

- 1 Turn the camera off.
- 2 Slide the battery-chamber cover latch toward the **S** mark and open the battery-chamber cover (1). Slide the battery into the battery chamber as shown (2). Close the battery-chamber cover (3).
- 3 Turn the camera on and check the battery level in the control panel.

After inserting the battery, set the date and time (see the lower right corner of this guide).



4 Mounting marks

1 Turn the camera off.

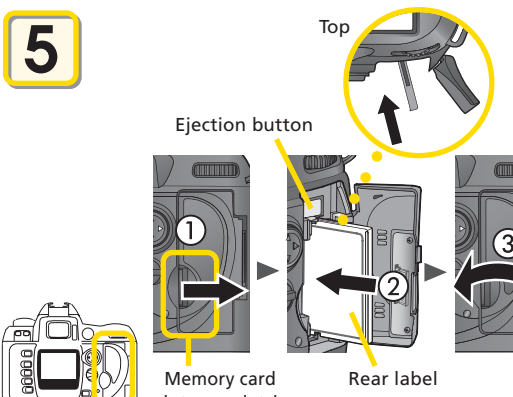
2 Keeping the mounting marks aligned as shown left, position the lens in the camera's bayonet mount. Avoid pressing the lens-release button and rotate the lens counterclockwise until it clicks into place.

3 Lock aperture at the minimum setting (highest f/-number). This step is not necessary for type G lenses.

Attach a lens (available separately)

- 1 Turn the camera off.
- 2 Keeping the mounting marks aligned as shown left, position the lens in the camera's bayonet mount. Avoid pressing the lens-release button and rotate the lens counterclockwise until it clicks into place.
- 3 Lock aperture at the minimum setting (highest f/-number). This step is not necessary for type G lenses.

To take full advantage of the features offered by the D100, use a type G or D CPU Nikkor lens.



5 Ejection button

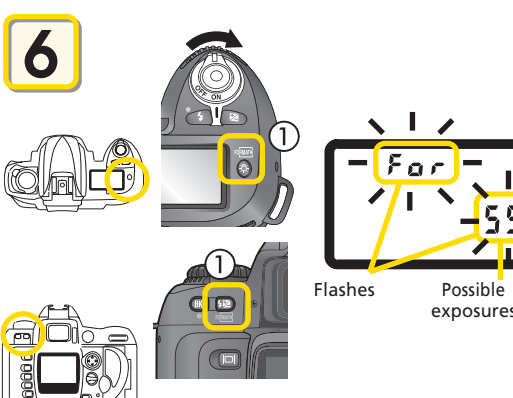
1 Turn the camera off and unlatch and open the card-slot cover (1).

2 Insert the memory card with the rear label toward the monitor, sliding the card in until it is fully seated in the contacts at the back of the slot (2) and the eject button pops up. Close the card slot cover (3).

Insert a memory card (available separately)

- 1 Turn the camera off and unlatch and open the card-slot cover (1).
- 2 Insert the memory card with the rear label toward the monitor, sliding the card in until it is fully seated in the contacts at the back of the slot (2) and the eject button pops up. Close the card slot cover (3).

The memory card slot slopes slightly toward the monitor. Match the angle of the memory card slot when inserting memory cards.



6 Flashes Possible exposures

1 Turn the camera on.

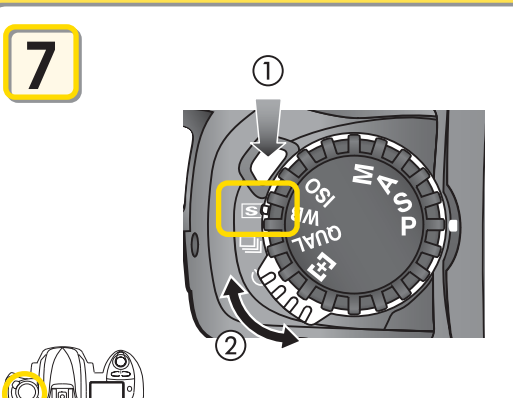
2 Hold the **FORMAT** (F) and **OK** (O) buttons down together for approximately two seconds (1). **F**, **O**, and the possible number of exposures will flash in the control panel display (2).

3 Push the **FORMAT** (F) and **OK** (O) buttons again to format the card. During formatting, the letters **F**, **O**, and the possible number of exposures will appear in the frame-count display. When formatting is complete, the frame-count display will show the possible number of exposures.

Format the memory card

Note that formatting memory cards permanently deletes any data they may contain.

- 1 Turn the camera on.
- 2 Hold the **FORMAT** (F) and **OK** (O) buttons down together for approximately two seconds (1). **F**, **O**, and the possible number of exposures will flash in the control panel display (2).
- 3 Push the **FORMAT** (F) and **OK** (O) buttons again to format the card. During formatting, the letters **F**, **O**, and the possible number of exposures will appear in the frame-count display. When formatting is complete, the frame-count display will show the possible number of exposures.



7

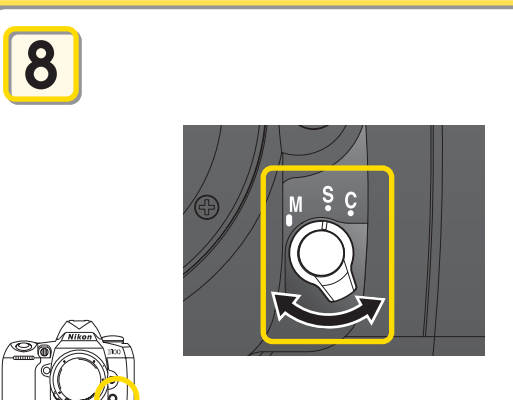
1 Turn the camera on.

2 Rotate the shooting mode dial to **S** (single frame) (2).

Set the shooting mode to S (single frame)

The D100 offers three shooting modes: single frame, continuous, and self-timer. To select single frame (the default setting), hold down the shooting-mode dial lock release (1) and rotate the shooting mode dial to **S** (2).

For more information on shooting mode, see page 41 of the *Guide to Digital Photography*.



8

1 Turn the camera on.

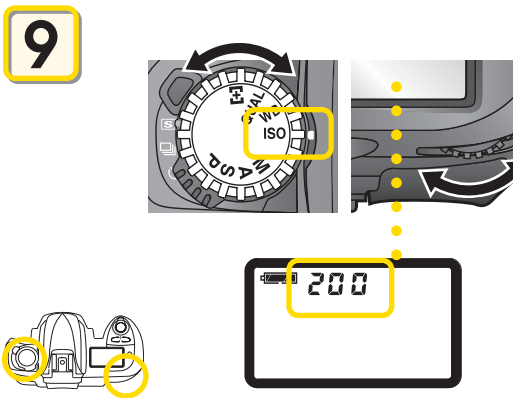
2 Rotate the focus mode dial to **S** (single-servo autofocus) (2).

Set the focus mode to S (single-servo autofocus)

In single-servo autofocus, the camera will focus when the shutter-release button is pressed halfway. Focus will lock while the shutter-release button is pressed halfway. Photographs can only be taken when the camera is in focus.

To select single-servo autofocus (the default setting), rotate the focus-mode dial until it clicks into place pointing to **S**.

For more information on focus mode, see page 63 of the *Guide to Digital Photography*.



9

1 Turn the camera on.

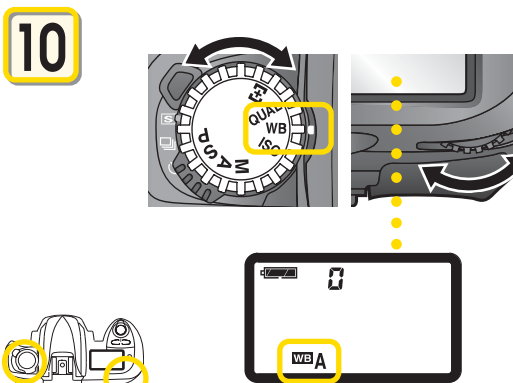
2 Rotate the function dial to **ISO** (2).

Set sensitivity (ISO equivalency) to ISO 200 equivalent

Sensitivity (the digital-camera equivalent of film speed) can be set between values approximately equivalent to ISO 200 and ISO 1600 in increments of 1/3 EV.

To set sensitivity to a value approximately equivalent to ISO 200 (the default value), turn the function dial to **ISO** and rotate the main command dial until **200** is displayed in the control panel.

For more information on sensitivity, see page 48 of the *Guide to Digital Photography*.



10

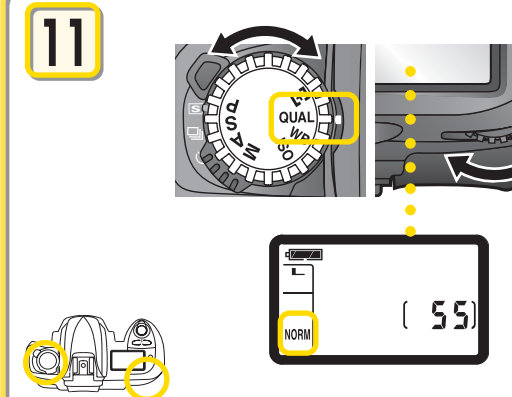
1 Turn the camera on.

2 Rotate the function dial to **WB** (2).

Set white balance to A (auto)

The D100 offers a choice of eight white balance modes according to the color temperature of the light source. To choose auto white balance (the default setting), turn the function dial to **WB** and rotate the main command dial until **A** (auto) is displayed in the control panel.

For more information on white balance, see page 50 of the *Guide to Digital Photography*.



11

1 Turn the camera on.

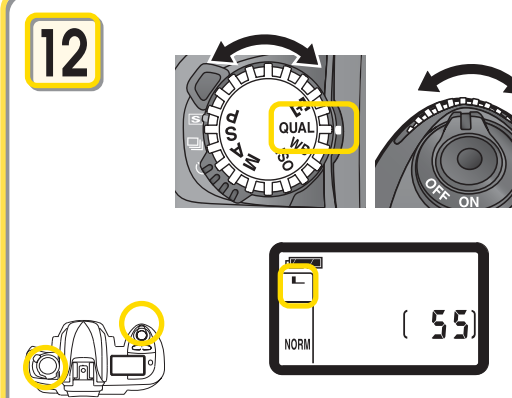
2 Rotate the function dial to **QUAL** (2).

Set image quality to NORM (JPEG normal)

Turn the function dial to **QUAL** and rotate the main command dial until **NORM** (JPEG normal, the default setting) is displayed in the control panel.

For more information on image quality, see page 44 of the *Guide to Digital Photography*.

The number of possible exposures depends on the capacity of the memory card used.



12

1 Turn the camera on.

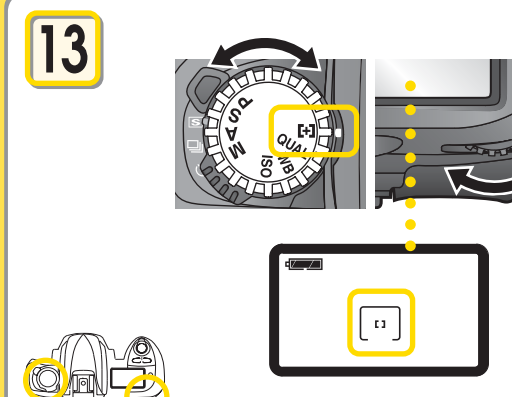
2 Rotate the function dial to **QUAL** (2).

Set image size to L (large)

Turn the function dial to **QUAL** and rotate the sub-command dial until **L** (large, the default setting) is displayed in the control panel.

For more information on image size, see page 46 of the *Guide to Digital Photography*.

The number of possible exposures depends on the capacity of the memory card used.



13

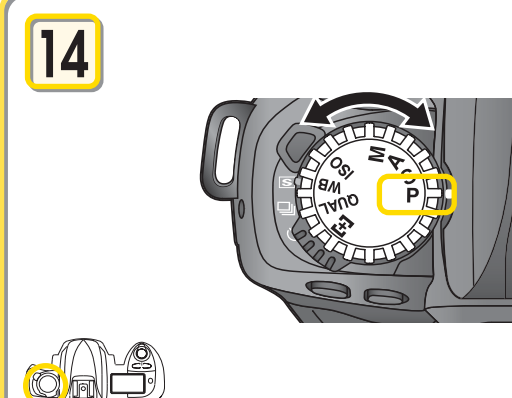
1 Turn the camera on.

2 Rotate the function dial to **AF-AREA** (2).

Set AF-area mode to L (single-area AF)

Turn the function dial to **AF-AREA** and rotate the main command dial until **L** (single-area AF, the default setting) is displayed in the control panel.

For more information on AF-area mode, see page 65 of the *Guide to Digital Photography*.



14

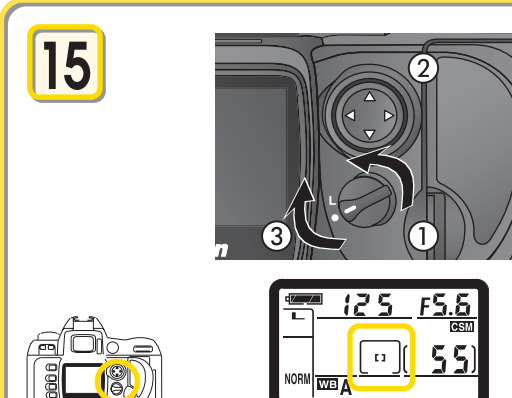
1 Turn the camera on.

2 Rotate the function dial to **P** (2).

Set the function dial to P (auto multi program exposure mode)

Turn the function dial to **P** (auto multi program exposure mode, the default setting).

For more information on exposure mode settings, see page 76 of the *Guide to Digital Photography*.



15

1 Turn the multi-selector lock dial to **•** to unlock the multi-selector (1).

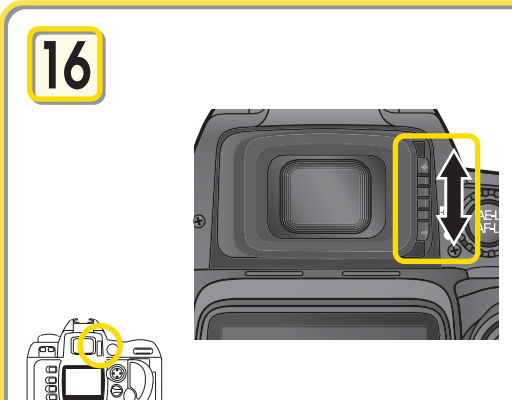
2 Use the multi-selector to select the center focus area (the default setting) in the viewfinder or control panel (2).

3 Return the multi-selector lock dial to **L** (3). While the multi-selector lock dial is in this position, the selected focus area will not change when the multi-selector is pressed. The multi-selector can still be used to navigate the camera menus.

Choose the center focus area

- 1 Turn the multi-selector lock dial to **•** to unlock the multi-selector (1).
- 2 Use the multi-selector to select the center focus area (the default setting) in the viewfinder or control panel (2).
- 3 Return the multi-selector lock dial to **L** (3). While the multi-selector lock dial is in this position, the selected focus area will not change when the multi-selector is pressed. The multi-selector can still be used to navigate the camera menus.

The number of possible exposures depends on the capacity of the memory card used.



16

1 Turn the camera on.

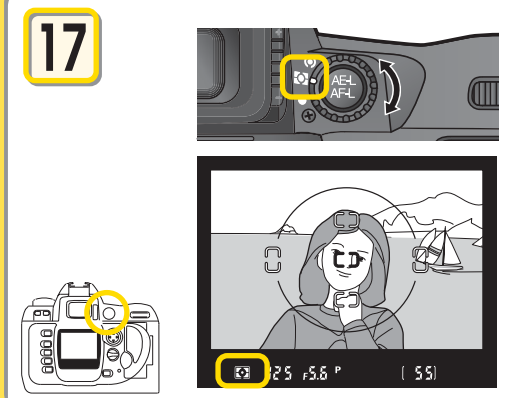
2 Slide the diopter adjustment control up and down until the focus brackets in the viewfinder are in sharp focus.

Focus the viewfinder

To adjust viewfinder focus, slide the diopter adjustment control up and down until the focus brackets in the viewfinder are in sharp focus.

If necessary, you can remove the rubber viewfinder eyepiece cup when adjusting diopter; when replacing the cup, the lettered face should be down.

When operating the diopter control with your eye to the viewfinder, care should be taken to avoid accidentally putting your fingers or fingernails in your eye.



17

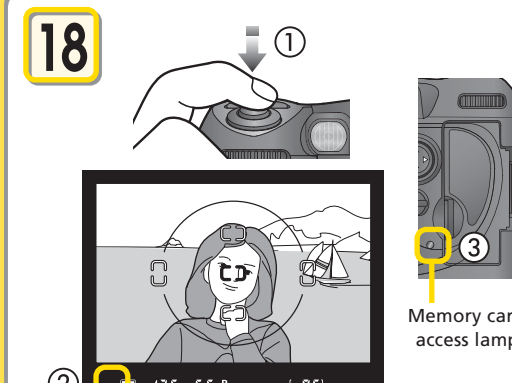
1 Turn the camera on.

2 Rotate the metering selector to **Matrix** (2).

Set the metering selector to matrix metering

Set the metering selector set to **Matrix** (matrix metering – the default setting). A **Matrix** icon will appear in the viewfinder when the shutter-release button is pressed halfway.

For more information on metering, see page 75 of the *Guide to Digital Photography*.



18

1 Compose your photograph with your subject in the center of the frame and press the shutter-release button halfway (1). Confirm that the in-focus indicator (●) glows steadily in the viewfinder (2).

2 Press the shutter-release button the rest of the way down to take the photograph. While the photograph is being recorded to the memory card, the card access lamp next to the memory card slot will light (3).

Frame your photograph and shoot

Compose your photograph with your subject in the center of the frame and press the shutter-release button halfway (1). Confirm that the in-focus indicator (●) glows steadily in the viewfinder (2).

Press the shutter-release button the rest of the way down to take the photograph. While the photograph is being recorded to the memory card, the card access lamp next to the memory card slot will light (3).

Do not turn the camera off or remove the memory card until the lamp has gone out.

Playing Photographs Back

Photographs can be played back in the monitor any time after shooting, allowing you to check the results of earlier photographs and choose a better angle or adjust lighting for your next shot. Unwanted pictures can be deleted instantly to make room for more photographs on the memory card.

Viewing Photographs

- 1 Insert the memory card containing the photos you want to view into the camera.

- 2 Turn the camera on.

- 3 Press the **INFO** button.

- 4 The most recent photograph on the memory card will be displayed in the monitor.

- Pressing the **INFO** button or the shutter-release button halfway while viewing photographs will turn the monitor off.
- The monitor will turn off automatically to save power if no operations are performed for the time specified (default 20 s) in Custom Setting 6 (Monitor Off).
- When the monitor turns off, press the **INFO** button again to return to playback mode.

- 5 Press the multi-selector down to view photos in the order recorded, up to go back.

Viewing Multiple Photographs

By pressing the **INFO** button and rotating the main command dial, you can display images in "contact sheets" (thumbnails) as follows: single image ↔ four thumbnails ↔ nine thumbnails ↔ single image.

For details, see the *Guide to Digital Photography*, page 116.

Zooming in for a Closer Look

- 1 If no image is displayed in the monitor, press the **INFO** button.

- 2 Press the **INFO** button to zoom in on the image displayed in single-image playback or on the image currently selected in thumbnail playback.

- 3 You can also zoom in on the image by pressing the **INFO** button and rotating the main command dial to the right. Press the **INFO** button and rotate the main command dial to the left to zoom out.

Use the multi-selector to view areas of the image not visible in the monitor.

- 4 Press **INFO** to cancel zoom.

Deleting Photographs

- 1 If no image is displayed in the monitor, press the **INFO** button.

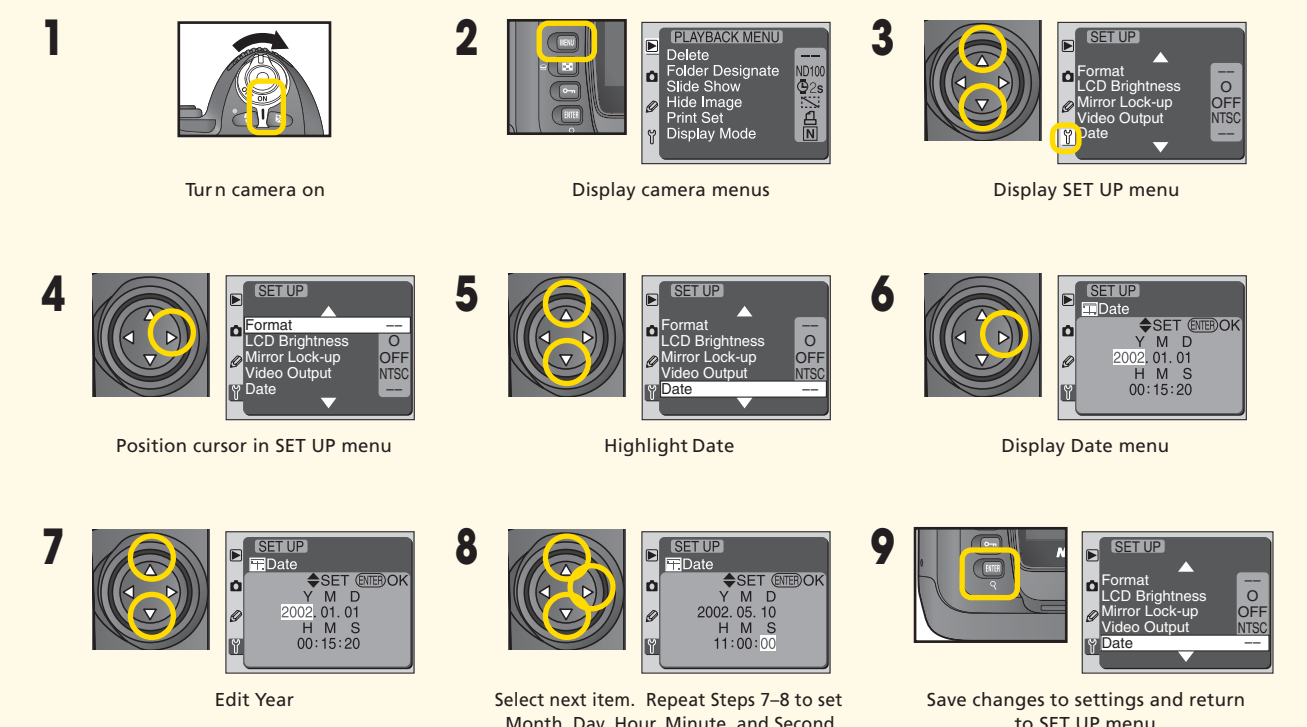
- 2 Press the multi-selector up or down to display the photo you want to delete.

- 3 Press the **INFO** button.

- 4 A confirmation dialog box is displayed. Press the multi-selector up or down to highlight **YES**, press the **INFO** button to select and delete the photo.

Set the Time and Date

Follow the steps below to set the time and date. The time and date will be recorded with all pictures. If you have not set the time and date, (the **CLOCK** icon in the control panel will flash), the time and date may not be correct but will still be recorded. For more information on the camera's internal clock-calendar, see page 19 of the *Guide to Digital Photography*.



► Viewing Pictures on a Computer

Supported Operating Systems:	Windows	•Windows XP Home Edition/Windows XP Professional	•Windows 2000 Professional
	(pre-installed versions only)	•Windows Millennium Edition (Me)	•Windows 98 Second Edition (SE)
	Macintosh	•Mac OS X (10.1.2 or later)	•Mac OS 9.0–9.2

Step1 Install Nikon View

Depending on the version of Nikon View installed, the installation process and the dialogs and messages displayed may differ from those described here.

Before Installing Nikon View:

- Turn off any virus-checking software
- Exit all other applications that may be running

Uninstall Existing Versions of Nikon View and Nikon Capture Version 1.x

Before installing Nikon View, you will need to uninstall Nikon Capture version 1.x (if installed) and any earlier versions of Nikon View.

Windows XP Home Edition, Windows XP Professional, Windows 2000 Professional, Mac OS X

When installing, using, or uninstalling Nikon View, log on as the “Computer administrator” (Windows XP Home Edition, Windows XP Professional), “Administrator” (Windows 2000 Professional) or “Admin” (Mac OS X).

Connecting the Camera to a Computer

Be sure to install Nikon View *before* connecting the camera to your computer. If the Add New Hardware Wizard is displayed when the camera is connected, click Cancel to exit the wizard.

Windows

1 Turn the computer on and wait for the operating system to start up.

2 Insert the Nikon View installer CD-ROM into the CD-ROM drive. The Install Center program will launch automatically and a language selection dialog will be displayed. Select a language and click **Next**.

If the Language Selection Dialog Is Not Displayed

Select My Computer from the Start menu (Windows XP Home Edition/Windows XP Professional; in other versions of Windows, double-click the My Computer icon on the desktop) and double-click the CD-ROM (NKVIEW6) icon in the “My Computer” window.

3 Click **Easy Install**. The standard install includes:

- Driver for D1 series cameras
- Coolpix Camera Drivers (Mass Storage driver) (Windows 98SE only)
- Quick Time 5
- Nikon View

•If you are using Windows 98SE, the dialog shown at right will be displayed when you click Easy Install. Click **OK** to begin installation of the Coolpix Camera Driver, and click **OK** again once installation is complete.

If you are using any operating system other than Windows 98SE, the dialog shown at right will be displayed when you click Easy Install. Click **OK** to begin installation of the D1, D1x and D1h Camera Driver, and click **OK** again once installation is complete.

(Under Windows 98SE installation of the D1, D1x and D1h Camera Driver follows installation of the Coolpix Camera Driver, above.)

4 Installation will continue with Quick Time 5. No registration number is required; leave the registration information blank and click **Next**.

5 The Nikon View setup program will now start. After reading the license agreement, click **Yes** to accept the agreement and proceed with installation.

6 The destination folder for Nikon View will be displayed under “Destination Folder”. Click **Next** to install Nikon View to this folder, or click **Browse** to select another destination.

7 Click **Yes** to create the destination folder.

8 Click **Yes** to create a shortcut to Nikon View on the desktop, **No** to proceed without creating a desktop shortcut.

9 Click **Finish** to exit the Nikon View installer.

10 Click **Yes** to restart your computer.

11 After the computer restarts, remove the Nikon View installer CD-ROM from the CD-ROM drive.

If the “Select Language” dialog is displayed after the computer restarts, click **Quit** to close the dialog and then remove the Nikon View installer CD-ROM from the CD-ROM drive.

Macintosh

1 Turn the computer on and wait for it to start up.

2 Insert the Nikon View installer CD-ROM into the CD-ROM drive.

Mac OS X

After inserting the Nikon View installer CD-ROM into the CD-ROM drive, double-click the CD-ROM (Nikon View 6) icon on the desktop and then double-click the Welcome icon. A language-selection dialog will be displayed; select a language and click **Next**.

Mac OS 9

The language-selection dialog will be displayed automatically when you insert the Nikon View installer CD-ROM.

CarbonLib (Mac OS 9 Only)

CarbonLib 1.5 or later is required to install this Nikon software. If the installer detects an earlier version of CarbonLib, a message will be displayed. Click **Install** to upgrade to CarbonLib 1.6.

Once installation is complete, be sure to restart the computer before going on to install Nikon software.

3 Click **Install** to begin installation of the following software:

- Nikon View
- Quick Time 5 (Mac OS 9 only)

4 Enter your administrator name and password and click **OK** (Mac OS X only).

5 Installation of Nikon View opens with a license agreement. Click **Accept** to accept the agreement and proceed with installation. The Nikon View “ReadMe” will then be displayed. This document contains important information; be sure to read it thoroughly before clicking **Continue** to proceed with installation.

Pictures taken with your D100 can be transferred to a computer, where they can be viewed and organized. To transfer your pictures, you will need to install Nikon View as described below. For complete instructions on using Nikon View, see the *Nikon View Reference Manual* (on CD-ROM).

6 Click **Install** to install Nikon View.

7 Add Nikon View to the Dock or create an alias on the desktop.

Mac OS X

Click **Yes** to add Nikon View to the Dock, **No** to proceed without adding Nikon View to the Dock.

Mac OS 9

Click **Yes** to create a shortcut to Nikon View on the desktop, **No** to proceed without creating an alias.

8 Click **Quit** to complete installation of Nikon View.

Installing Quick Time 5 (Mac OS 9 Only)

Under Mac OS 9, installation of Quick Time 5 will begin when installation of all other software is complete. Follow the on-screen instructions to complete installation. When the Registration dialog is displayed, click **Continue**. Do not supply registration information.

9 Click **Restart** to restart your computer.

10 After the computer restarts, remove the Nikon View installer CD-ROM from the CD-ROM drive.

If the “Select Language” dialog is displayed after the computer restarts, click **Quit** to close the dialog and then remove the Nikon View installer CD-ROM from the CD-ROM drive.

Step2 Transfer pictures

Use a Reliable Power Source

When transferring pictures between the camera and the computer, use a fully-charged EN-EL3 battery. If in doubt, charge the battery before beginning transfer or use an EH-5 AC adapter (available separately). *Do not, under any circumstances, use another make or model of AC adapter.*

Mac OS X (Version 10.1.2–10.1.5)

Before connecting the camera, select **Applications** from the Finder **Go** menu and double-click the **Image Capture** icon. The Image Capture dialog will be displayed. Select **None** from the **Automatic Task** and **Hot Plug Action** menus and close the Image Capture dialog. If you install Apple iPhoto software after you install Nikon View, repeat this step to prevent both iPhoto and Nikon View from starting when you connect your camera.

Mac OS X (Version 10.2 or later)

Before connecting the camera, select **Applications** from the Finder **Go** menu and double-click the **Image Capture** icon. The Image Capture dialog will be displayed. Select **Preferences...** from the **Image Capture** menu to display the Image Capture Preferences dialog. In the “Camera Preferences” area, select **No application** from the “When a camera is connected, open” menu.

1 Turn the camera off. Connect the camera to your computer as shown in the illustration, using the USB cable provided.

USB Hub

The camera may not function as expected when connected via a USB hub or keyboard.

► Nikon View

Nikon View is made up of four components: Nikon Transfer, Nikon Browser, Nikon Viewer, and Nikon Editor. More information on Nikon View can be found using on-line help or by reading the *Nikon View Reference Manual* included on the reference CD-ROM provided with your camera.

Pictures taken with your Nikon digital camera



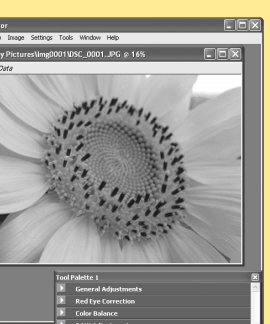
When you connect the camera, Nikon Transfer will start automatically.

Nikon Viewer



Use Nikon Viewer to inspect your pictures in detail.

Nikon Editor



Use Nikon Editor to edit your pictures.

The functional example of Nikon View

E-mail

Upload

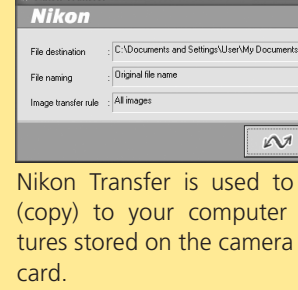
Print

Slide shows

Find pictures

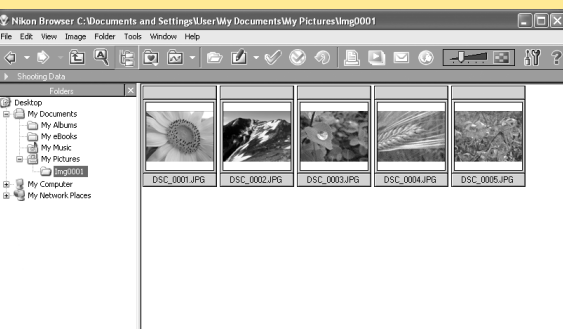
HTML output

Nikon Transfer



Nikon Transfer is used to transfer (copy) to your computer the pictures stored on the camera memory card.

Nikon Browser



Nikon Browser lists the pictures on your computer as thumbnail images (appearance of Nikon Browser window may differ slightly in some areas).

* Illustrations are for Windows XP.

2 Turn the camera on.

Windows

The camera will automatically be recognized and registered as a new device. Once the camera has been registered, the Nikon Transfer component of Nikon View will be displayed in the computer monitor. The camera monitor will remain blank.

AutoPlay (Windows XP Home Edition/Windows XP Professional)

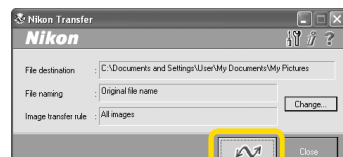
When you turn the camera on, the dialog shown at right will be displayed. Select **Copy pictures to a folder on my computer using Nikon View 6** and click **OK** to start Nikon View. To bypass this dialog in the future, check **Always do the selected action**.

See “Troubleshooting” in the *Nikon View Reference Manual* for information on what to do if Nikon Transfer fails to start automatically.

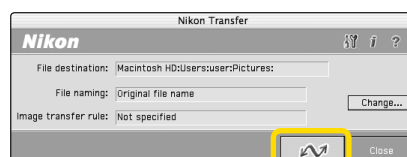
Macintosh

The Nikon Browser component of Nikon View will start, followed by Nikon Transfer. The camera monitor will remain blank.

3 Click the button in the Nikon Transfer window. All pictures on the memory card will be transferred to your computer.



Windows

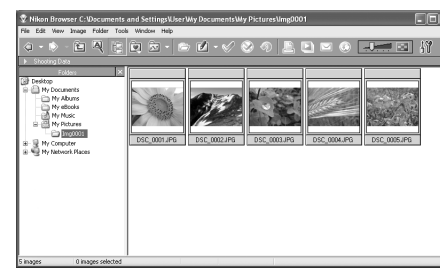


Macintosh

4 Once transfer is complete, your pictures will be displayed in the Nikon Browser component of Nikon View.

Windows

The default destination folder for transferred pictures is the My Pictures or My Documents folder. Pictures will have file names of the form “Imgnnnn”, where “nnnn” is a four-digit number assigned automatically in ascending order by Nikon View, starting from 0001.



Macintosh

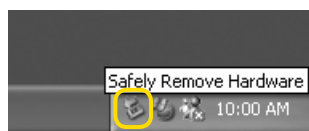
The default destination folder for transferred pictures is the Pictures folder (Mac OS X) or the Documents folder (Mac OS 9). Pictures will have file names of the form “Imgnnnn”, where “nnnn” is a four-digit number assigned automatically in ascending order by Nikon View, starting from 0001.



5 Once your pictures are displayed in Nikon Browser, transfer is complete and you can remove the camera from the system.

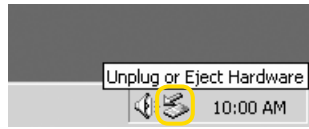
Windows XP Home Edition/Windows XP Professional

Click the “Safely Remove Hardware” icon in the taskbar and select **Safely remove USB Mass Storage Device** from the menu that appears.



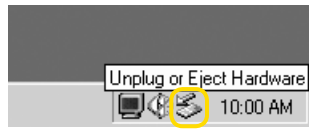
Windows 2000 Professional

Click the “Unplug or Eject Hardware” icon in the taskbar and select **Stop USB Mass Storage Device** from the menu that appears.



Windows Millennium Edition (Me)

Click the “Unplug or Eject Hardware” icon in the taskbar and select **Stop USB Disk** from the menu that appears.



Windows 98 Second Edition (SE)

In My Computer, click with the right mouse button on the removable disk corresponding to the camera and select **Eject** from the menu that appears.



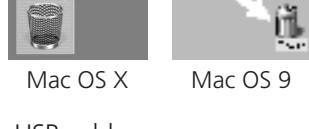
Mac OS X

Drag the “NIKON_D100” camera volume into the Trash.



Mac OS 9

Drag the “NIKON D100” camera volume into the Trash.



You can now turn the camera off and disconnect the USB cable.